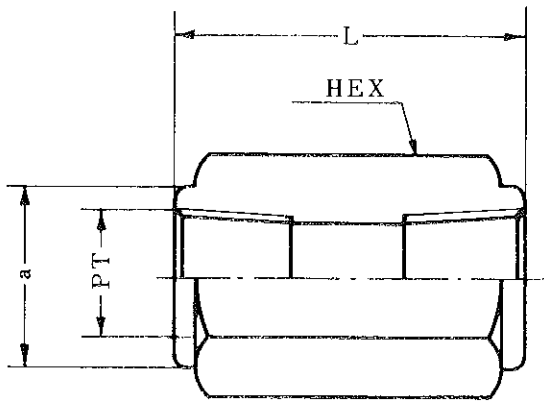


ソケット  
SOCKET TYPE

丹銅管用継手 Fittings For Tombac Tubes

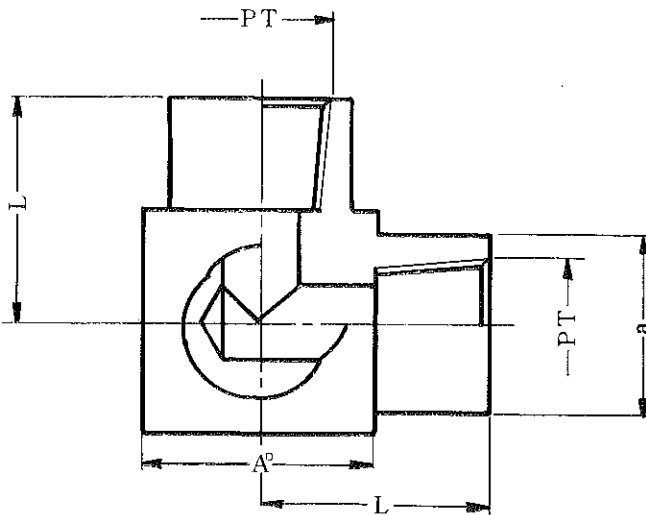
単位/mm  
Dimension in mm



型 式 Type	管用ネジ Pipe thread		L	a	対辺 Opposite side
	PT				HEX
1/2	1/2	Rc NPT	36	31	32
3/4	3/4	Rc NPT	44	37	38
1	1	Rc NPT	50	45	46
1 1/4	1 1/4	Rc NPT	56	54	55
1 1/2	1 1/2	Rc NPT	60	64	65
2	2	Rc NPT	65	74	75

エルボ  
ELBOW TYPE

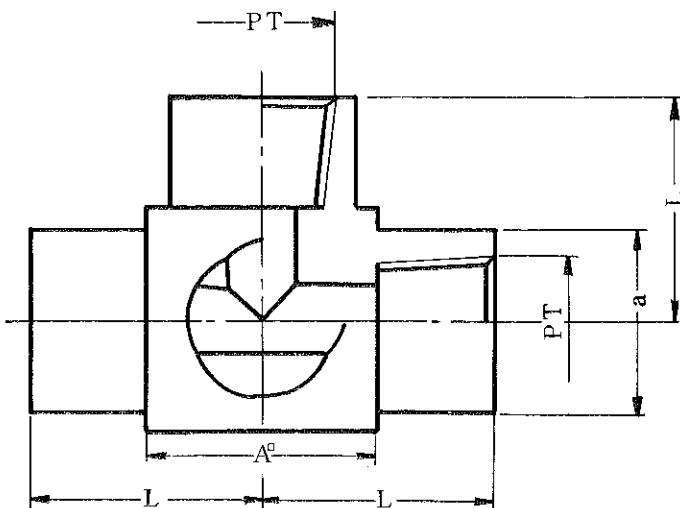
単位/mm  
Dimension in mm



型 式 Type	管用ネジ Pipe thread		L	A <sup>□</sup>	a
	PT				
1/2	1/2	Rc NPT	30	32	31
3/4	3/4	Rc NPT	35	38	37
1	1	Rc NPT	41	46	45
1 1/4	1 1/4	Rc NPT	48.5	55	54
1 1/2	1 1/2	Rc NPT	54.5	65	64
2	2	Rc NPT	59.5	77	76

ティー  
TEE TYPE

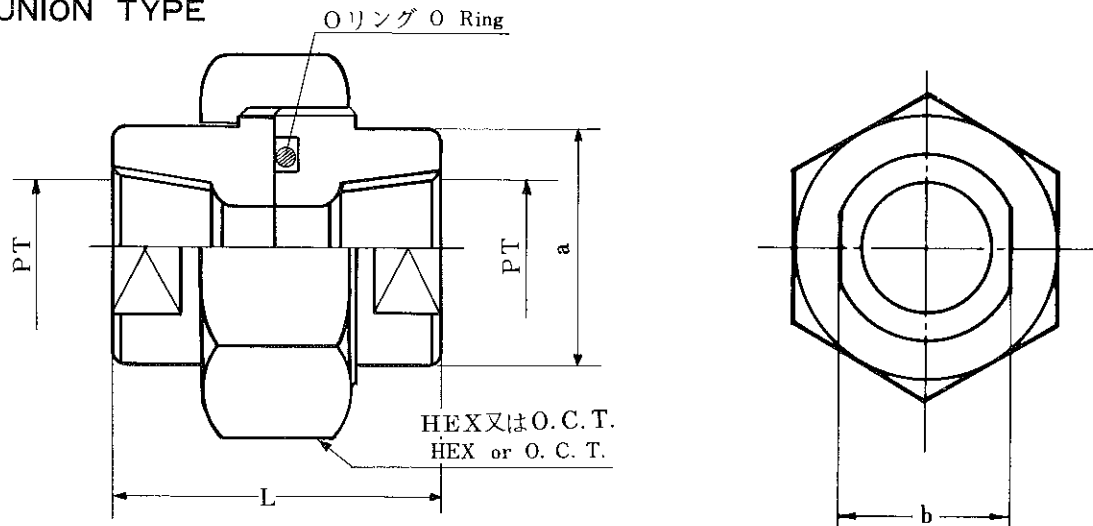
単位/mm  
Dimension in mm



型 式 Type	管用ネジ Pipe thread		L	A <sup>□</sup>	a
	PT				
1/2	1/2	Rc NPT	30	32	31
3/4	3/4	Rc NPT	35	38	37
1	1	Rc NPT	41	46	45
1 1/4	1 1/4	Rc NPT	48.5	55	54
1 1/2	1 1/2	Rc NPT	54.5	65	64
2	2	Rc NPT	59.5	77	76

# 丹銅管用継手 Fittings For Tombac Tubes

## ユニオン UNION TYPE



単位/mm  
Dimension in mm

※ 御注文により、シートPK型及  
PKレス型も製作致します。

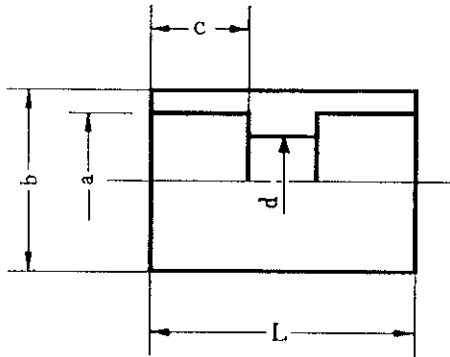
∴ In compliance with the customer's  
order, either of type with seat packing  
or type without packing (packingless  
type) can be manufactured.

型 式 Type	管用ネジ Pipe thread		L	対辺 Opposite side		b	a
	P T			HEX	O.C.T.		
¼	¼	Rc NPT	38	35		19	22
⅜	⅜	Rc NPT	40	41		23	26
½	½	Rc NPT	44	46		29	32
¾	¾	Rc NPT	50	55		35	38
1	1	Rc NPT	56	65		43	47
1¼	1¼	Rc NPT	62	75		51	55
1½	1½	Rc NPT	70		80	57	61
2	2	Rc NPT	76		95	71	76

# 銀口ウ継手

Silver Solder Fittings (C3604)

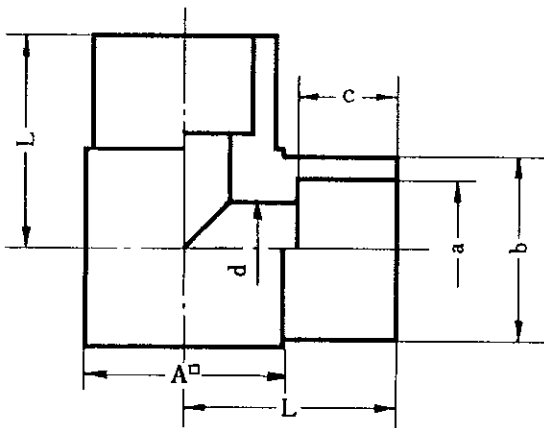
## ソケット SOKET TYPE



単位/mm  
Dimension in mm

型式 Type	使用管外径 Tube O.D	L	a <sup>+0.15</sup> <sub>0</sub>	b	C	d
1/2	12.7	26	12.7	19	11	8.5
3/4	19.05	28	19.05	25	12	15
1	25.4	32	25.4	32	13	20
1 1/4	31.75	36	31.75	38	14	28
1 1/2	38.1	48	38.1	45	17	34
2	50.8	54	50.8	58	18	46

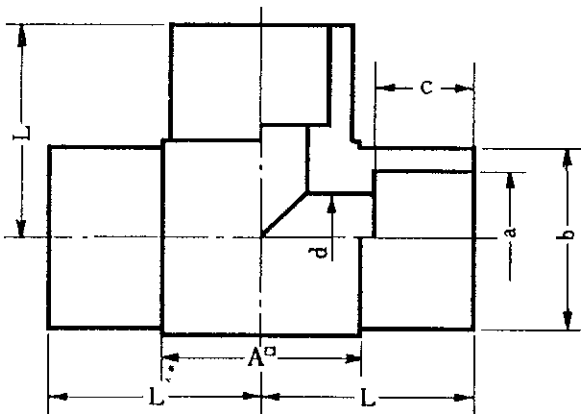
## エルボ ELBOW TYPE



単位/mm  
Dimension in mm

型式 Type	使用管外径 Tube O.D	L	a <sup>+0.15</sup> <sub>0</sub>	b	C	A	d
1/2	12.7	22.5	12.7	19	11	21	8.5
3/4	19.05	26	19.05	25	12	26	15
1	25.4	31	25.4	32	13	34	20
1 1/4	31.75	34.5	31.75	38	14	39	28
1 1/2	38.1	41	38.1	45	17	46	34
2	50.8	48.5	50.8	58	18	59	46

## ティー TEE TYPE



単位/mm  
Dimension in mm

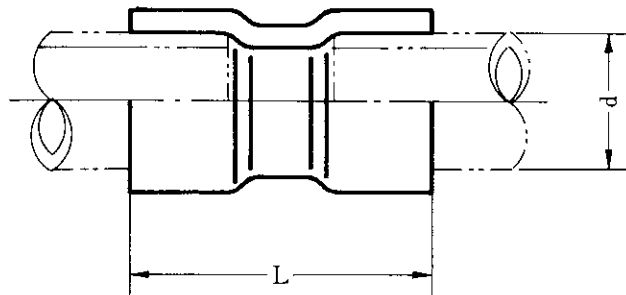
型式 Type	使用管外径 Tube O.D	L	a <sup>+0.15</sup> <sub>0</sub>	b	C	A	d
1/2	12.7	22.5	12.7	19	11	21	8.5
3/4	19.05	26	19.05	25	12	26	15
1	25.4	31	25.4	32	13	34	20
1 1/4	31.75	34.5	31.75	38	14	39	28
1 1/2	38.1	41	38.1	45	17	46	34
2	50.8	48.5	50.8	58	18	59	46

口ウ付用継手

SW-TYPE

Silver Soldering Fittings (C 1220)

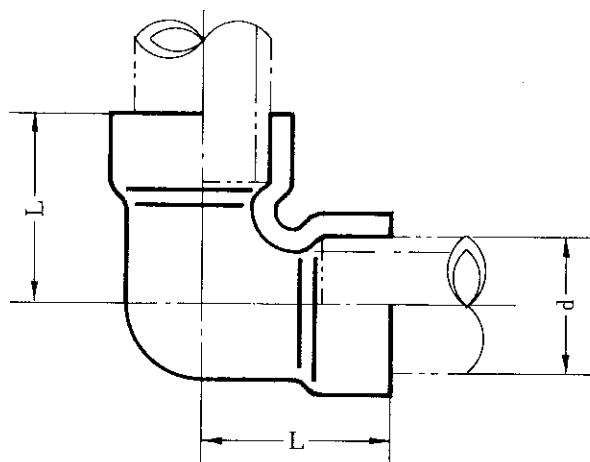
単位/mm  
Dimension in mm



型式 Type	使用銅管外径 Tube O.D	L
	d	
SW-1/4	6.35	20
SW-3/8	9.52	
SW-1/2	12.7	22
SW-5/8	15.88	26
SW-3/4	19.05	36.5
SW-7/8	22.23	39
SW-1	25.4	48

LW-TYPE

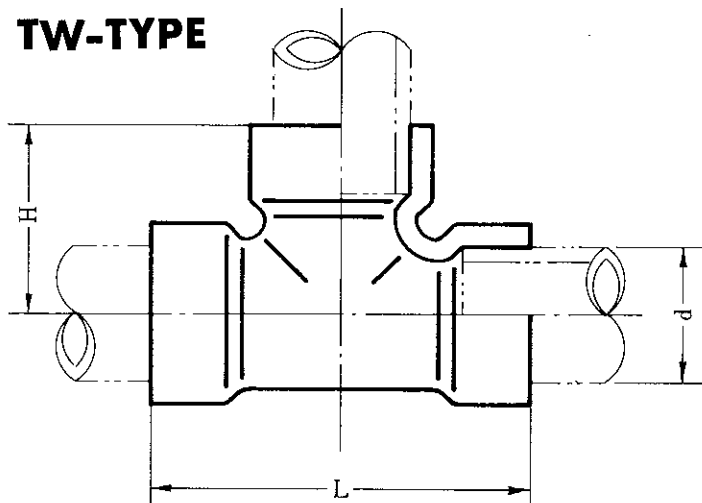
単位/mm  
Dimension in mm



型式 Type	使用銅管外径 Tube O.D	L
	d	
LW-1/4	6.35	16
LW-3/8	9.52	22
LW-1/2	12.7	23
LW-5/8	15.88	25
LW-3/4	19.05	30
LW-7/8	22.23	34
LW-1	25.4	39

TW-TYPE

単位/mm  
Dimension in mm

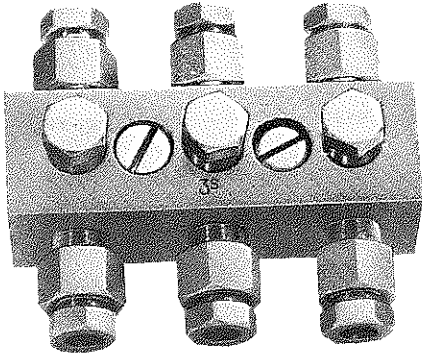


型式 Type	使用銅管外径 Tube O.D	L	H
	d		
TW-1/4	6.35	32	16
TW-3/8	9.52	36	18
TW-1/2	12.7	37	18.5
TW-5/8	15.88	50	25
TW-3/4	19.05	60	30
TW-7/8	22.23	68	34
TW-1	25.4	78	39

## FTB-TYPE

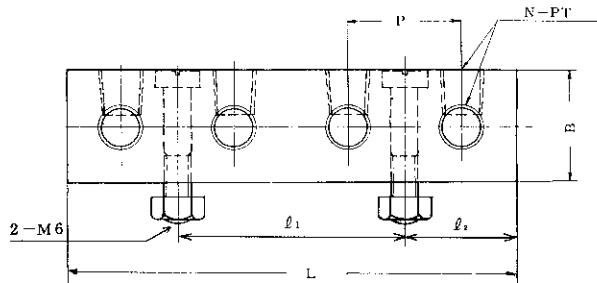
※ 1. 黄銅製 (JIS-C3604)

※ 2. “FTB”には継手類を含まぬものを標準とします。

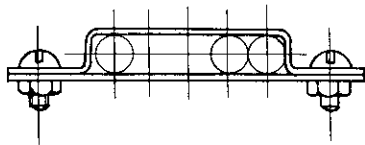
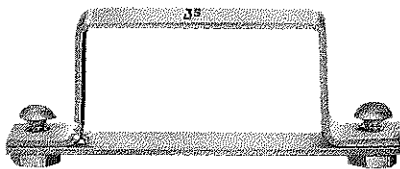


単位mm

型 式	管用ネジ		L	四角 B	P	分岐数 N	$l_1$	$l_2$
	P	T						
FTB-3× $\frac{1}{8}$	$\frac{1}{8}$	Rc NPT	74	25	25	3	25	24.5
FTB-4× $\frac{1}{8}$			99			4	50	
FTB-5× $\frac{1}{8}$			124			5	75	
FTB-3× $\frac{1}{4}$	$\frac{1}{4}$	Rc NPT	88	32	30	3	30	29
FTB-4× $\frac{1}{4}$			118			4	60	
FTB-5× $\frac{1}{4}$			148			5	90	



## TB-TYPE



(備考)

※ 1. 使用銅管の種類

6φ,  $\frac{1}{4}$ "(6.35), 8φ,  $\frac{3}{8}$ "(9.53), 10φ

※ 2. T B. の呼び方は、名称、種別とする。

[例]

T B-6-2列×1段

型 式	型 式
T B-2列×1段	T B-6列×3段
T B-2列×2段	T B-7列×1段
T B-3列×1段	T B-7列×2段
T B-3列×2段	T B-7列×3段
T B-3列×3段	T B-8列×1段
T B-4列×1段	T B-8列×2段
T B-4列×2段	T B-8列×3段
T B-4列×3段	T B-9列×1段
T B-5列×1段	T B-9列×2段
T B-5列×2段	T B-9列×3段
T B-5列×3段	T B-10列×1段
T B-6列×1段	T B-10列×2段
T B-6列×2段	T B-10列×3段

FTB-TYPE

Dimension in mm.

※ 1. The customer's order for brass (JIS-C3604) made FTB Type fittings is acceptable, if so required.

※ 2. The standard FTB Type fittings are not attached with connectors.

Type	Pipe thread		L	Square	Pitch	Number of branching holes	ℓ <sub>1</sub>	ℓ <sub>2</sub>
	PT			B	P	N		
FTB-3X1/8	1/8	Rc NPT	74	25	25	3	25	24.5
FTB-4X1/8			99			4	50	
FTB-5X1/8			124			5	75	
FTB-3X1/4	1/4	Rc NPT	88	32	30	3	30	29
FTB-4X1/4			118			4	60	
FTB-5X1/4			148			5	90	

TB-TYPE

※ 1. Copper tube sizes:  
6φ, 1/4 sq. in (6.35mm),  
8φ, 3/8 sq. in (9.53mm),  
10φ

※ 2. In the customer's order, number and sizes of tubes are required to be indicated.

(Example of customer's order)

TB6 - 2 lines x 1 layer

Notes: TB=Tube band  
6 =Tube size,  
2 =Number of tube lines,  
1 =Number of layers

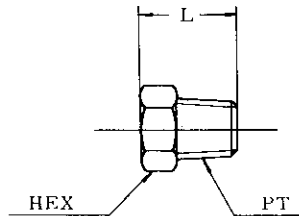
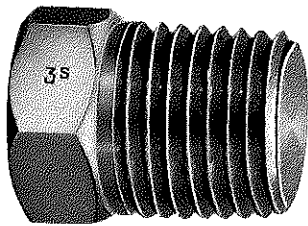
Type	Type
TB-2 lines x 1 layer	TB-6 lines x 3 layers
TB-2 lines x 2 layers	TB-7 lines x 1 layer
TB-3 lines x 1 layer	TB-7 lines x 2 layers
TB-3 lines x 2 layers	TB-7 lines x 3 layers
TB-3 lines x 3 layers	TB-8 lines x 1 layer
TB-4 lines x 1 layer	TB-8 lines x 2 layers
TB-4 lines x 2 layers	TB-8 lines x 3 layers
TB-4 lines x 3 layers	TB-9 lines x 1 layer
TB-5 lines x 1 layer	TB-9 lines x 2 layers
TB-5 lines x 2 layers	TB-9 lines x 3 layers
TB-5 lines x 3 layers	TB-10 lines x 1 layer
TB-6 lines x 1 layer	TB-10 lines x 2 layers
TB-6 lines x 2 layers	TB-10 lines x 3 layers

(Refer the sketches on the left page)

## PM-TYPE

※ 御注文により、SUS、も製作します。

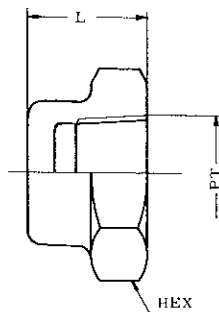
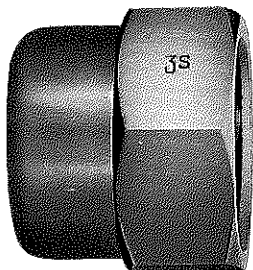
※ The customer's order for PM Type fittings made of SUS (stainless steel) is acceptable, if so required.



単位/mm  
Dimension in mm

型 式 Type	管用ネジ Pipe thread		L	対辺 Opposite side
	P T			HEX
PM 1/8	1/8	R NPT	15	12
PM 1/4	1/4	R NPT	18	14
PM 3/8	3/8	R NPT	20	19
PM 1/2	1/2	R NPT	25	23
PM 3/4	3/4	R NPT	28	29
PM 1	1	R NPT	32	35
PM 1 1/4	1 1/4	R NPT	40	46
PM 1 1/2	1 1/2	R NPT	44	50
PM 2	2	R NPT	50	65

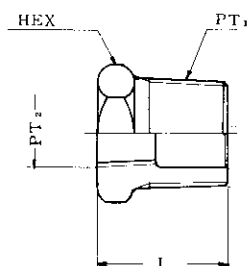
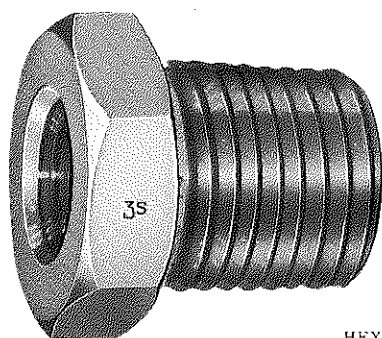
## PC-TYPE



単位/mm  
Dimension in mm

型 式 Type	管用ネジ Pipe thread		L	対辺 Opposite side
	P T			HEX
PC 1/8	1/8	Rc NPT	13	14
PC 1/4	1/4	Rc NPT	17	17
PC 3/8	3/8	Rc NPT	18	21
PC 1/2	1/2	Rc NPT	25	26
PC 3/4	3/4	Rc NPT	27	32
PC 1	1	Rc NPT	30	41
PC 1 1/4	1 1/4	Rc NPT	32	50
PC 1 1/2	1 1/2	Rc NPT	32	58
PC 2	2	Rc NPT	40	70

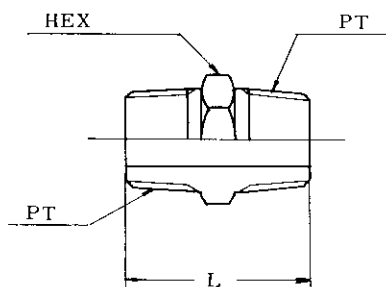
## SMN-TYPE



単位/mm  
Dimension in mm

型式 Type PT <sub>1</sub> × PT <sub>2</sub>	管用ネジ Pipe thread		L	対辺 Opposite side		
	PT <sub>1</sub>	PT <sub>2</sub>		HEX		
SMN 1/4 × 1/8	1/4	R NPT	18	14		
SMN 3/8 × 1/4	3/8	R NPT	20	19		
SMN 1/2 × 1/4	1/2	R NPT	25	23		
SMN 1/2 × 3/8					3/8	Rc NPT
SMN 3/4 × 1/4	3/4	R NPT	28	29		
SMN 3/4 × 3/8					3/8	Rc NPT
SMN 3/4 × 1/2					1/2	Rc NPT
SMN 1 × 1/4	1	R NPT	32	35		
SMN 1 × 3/8					3/8	Rc NPT
SMN 1 × 1/2					1/2	Rc NPT
SMN 1 × 3/4					3/4	Rc NPT
SMN 1 1/4 × 1/4	1 1/4	R NPT	40	46		
SMN 1 1/2 × 3/4	1 1/2	R NPT	44	50		
SMN 2 × 1	2	R NPT	50	65		

## SM-TYPE



単位/mm  
Dimension in mm

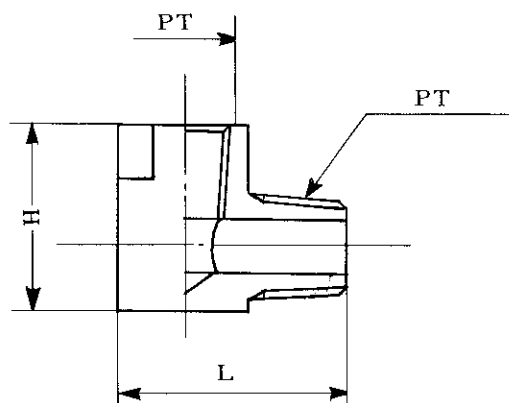
型式 Type	管用ネジ Pipe thread		L	対辺 Opposite side
	PT			HEX
SM 1/8	1/8	R NPT	25	12
SM 1/4	1/4	R NPT	31	14
SM 3/8	3/8	R NPT	34	19
SM 1/2	1/2	R NPT	43	23
SM 3/4	3/4	R NPT	48	29
SM 1	1	R NPT	54	35
SM 1 1/4	1 1/4	R NPT	70	46
SM 1 1/2	1 1/2	R NPT	80	50
SM 2	2	R NPT	85	65

※ 御注文により異径ニップルも製作します。

※ The customer's order for deformed nipple can be manufactured, if so required.



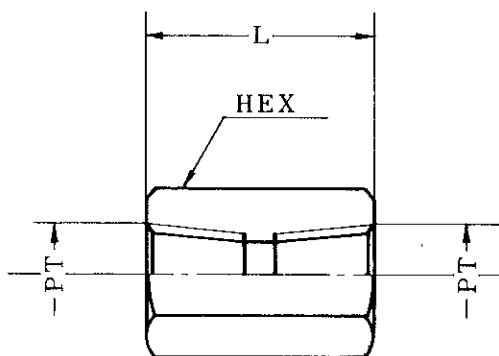
# LMN-TYPE



単位/mm  
Dimension in mm

型式 Type	管用ネジ Pipe thread		L	H
	PT			
LMN 1/8	1/8	R. Rc NPT	24	17
LMN 1/4	1/4	R. Rc NPT	30	23
LMN 3/8	3/8	R. Rc NPT	35	27
LMN 1/2	1/2	R. Rc NPT	44	35
LMN 3/4	3/4	R. Rc NPT	52	41
LMN 1	1	R. Rc NPT	64	50

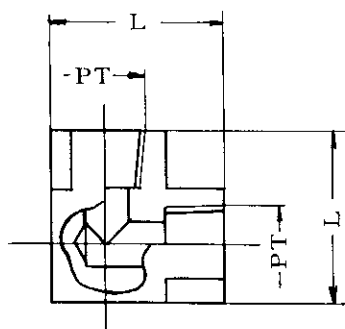
# SN-TYPE



単位/mm  
Dimension in mm

型式 Type	管用ネジ Pipe thread		L	対辺 Opposite side
	PT			HEX
SN 1/8	1/8	Rc NPT	22	14
SN 1/4	1/4	Rc NPT	28	17
SN 3/8	3/8	Rc NPT	31	21
SN 1/2	1/2	Rc NPT	39	26
SN 3/4	3/4	Rc NPT	44	32
SN 1	1	Rc NPT	50	41

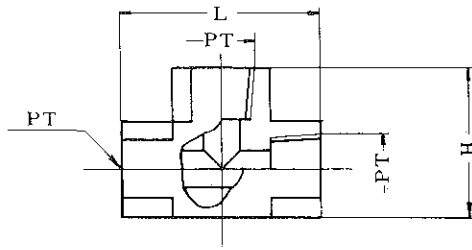
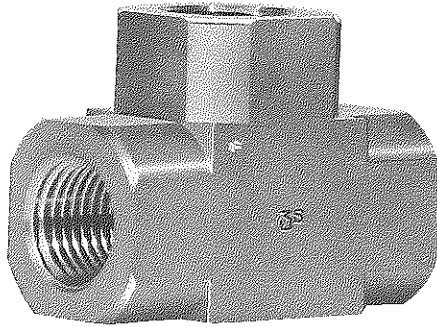
# LN-TYPE



単位/mm  
Dimension in mm

型式 Type	管用ネジ Pipe thread		L
	PT		
LN 1/8	1/8	Rc NPT	22
LN 1/4	1/4	Rc NPT	28
LN 3/8	3/8	Rc NPT	34
LN 1/2	1/2	Rc NPT	42
LN 3/4	3/4	Rc NPT	50
LN 1	1	Rc NPT	60

# TN-TYPE



単位/mm  
Dimension in mm

型式 Type	管用ネジ Pipe thread		L	H
	PT			
TN 1/8	1/8	Rc NPT	30	22
TN 1/4	1/4	Rc NPT	40	28
TN 3/8	3/8	Rc NPT	47	34
TN 1/2	1/2	Rc NPT	58	42
TN 3/4	3/4	Rc NPT	68	50
TN 1	1	Rc NPT	79	60

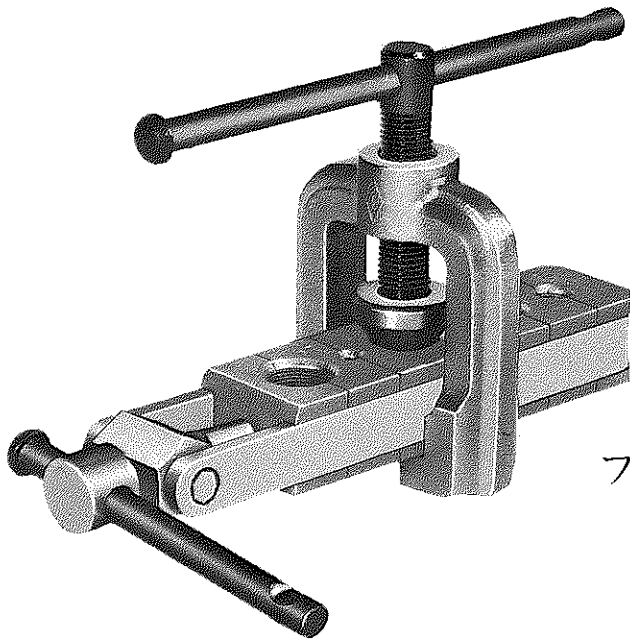
弊社推奨の米国Imperial社製配管工具

Special Designed  
 "IMPERIAL" Brand, Piping Tool  
 Made In USA

ベンダー  
 Bender



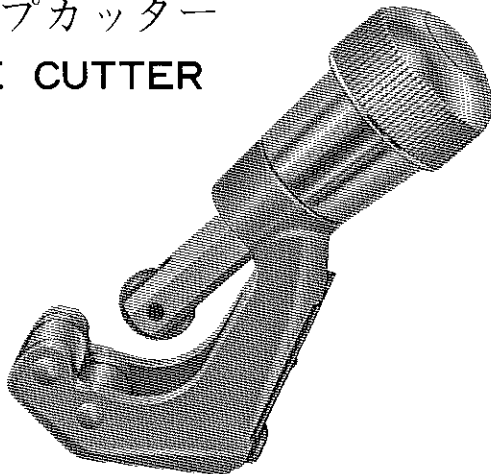
工具番号 Tool No.	使用鋼管外径 Tube O. D.
No. 364 F H A M	6
No. 364 F H A M	8
No. 364 F H A M	10
No. 364 F H A M	12
No. 364 F H B	¼" (6.35)
No. 364 F H B	⅜" (9.53)
No. 364 F H B	½" (12.7)



フレアリングツール  
FLARING TOOL

型 式 Type	工具番号 Tool Nos	使用範囲 Applicable limits
ミリ用 for Millimeter calibration	No. 507FCM	6 <sup>m</sup> / <sub>m</sub> ~ 16 <sup>m</sup> / <sub>m</sub>
インチ用 for Inch calibration	No. 437FC	3/16" ~ 5/8"
	No. 507FC	3/16" ~ 5/8"
ステンレス用 for Stainless steel tubes	No. 400 F	3/16" ~ 5/8"
	No. 537 F	3/4" ~ 1 1/4"

パイプカッター  
PIPE CUTTER



型 式 Type	工具番号 Tool Nos	使用範囲 Applicable limits
カッター Cutters	No. TC-1000	1/8" ~ 1 1/8"
替 刃 Spare blades	No. 175015	銅 管 用 for copper tubes
	No. 175046	ステンレス用 for stainless steel tubes